

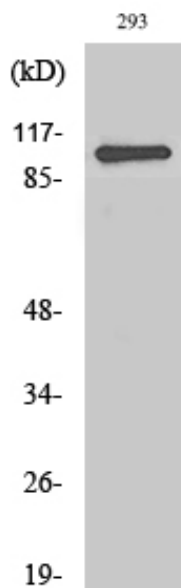


# RoXaN Polyclonal Antibody

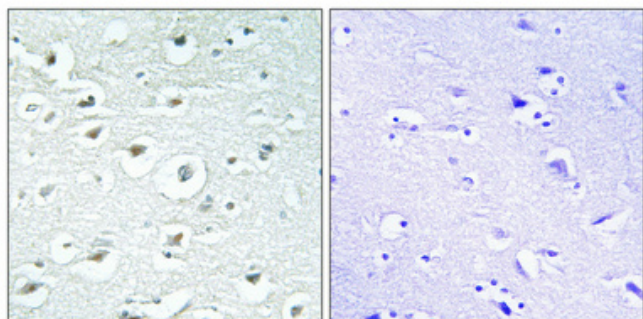
<b>Catalog No</b>	YP-Ab-01990
<b>Isotype</b>	IgG
<b>Reactivity</b>	Human;Rat;Mouse;
<b>Applications</b>	WB;IHC;IF;ELISA
<b>Gene Name</b>	ZC3H7B
<b>Protein Name</b>	Zinc finger CCCH domain-containing protein 7B
<b>Immunogen</b>	The antiserum was produced against synthesized peptide derived from human ZC3H7B. AA range:851-900
<b>Specificity</b>	RoXaN Polyclonal Antibody detects endogenous levels of RoXaN protein.
<b>Formulation</b>	Liquid in PBS containing 50% glycerol, 0.5% BSA and 0.02% sodium azide.
<b>Source</b>	Polyclonal, Rabbit,IgG
<b>Purification</b>	The antibody was affinity-purified from rabbit antiserum by affinity-chromatography using epitope-specific immunogen.
<b>Dilution</b>	WB: 1/500 - 1/2000. IHC: 1/100 - 1/300. ELISA: 1/10000.. IF 1:50-200
<b>Concentration</b>	1 mg/ml
<b>Purity</b>	≥90%
<b>Storage Stability</b>	-20°C/1 year
<b>Synonyms</b>	ZC3H7B; KIAA1031; Zinc finger CCCH domain-containing protein 7B; Rotavirus 'X'-associated non-structural protein; RoXaN
<b>Observed Band</b>	111kD
<b>Cell Pathway</b>	Nucleus . Nuclear localization seems to be depleted upon rotavirus A infection.
<b>Tissue Specificity</b>	Brain,Lung,Trachea,Uterus,
<b>Function</b>	similarity:Contains 1 C2H2-type zinc finger.,similarity:Contains 3 TPR repeats.,similarity:Contains 4 C3H1-type zinc fingers.,subcellular location:Nuclear localization seems to be depleted upon rotavirus A infection.,subunit:Interacts (via LD motif) with rotavirus A NSP3 (via the coiled-coil region).,
<b>Background</b>	This gene encodes a protein that contains a tetratricopeptide repeat domain. The encoded protein also interacts with the rotavirus non-structural protein NSP3. [provided by RefSeq, Jul 2008],
<b>matters needing attention</b>	Avoid repeated freezing and thawing!
<b>Usage suggestions</b>	This product can be used in immunological reaction related experiments. For more information, please consult technical personnel.



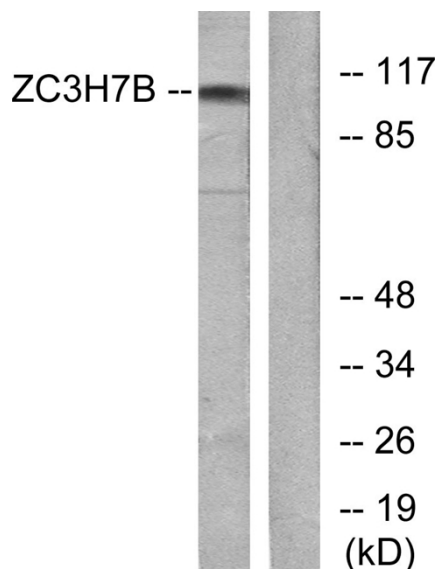
## Products Images



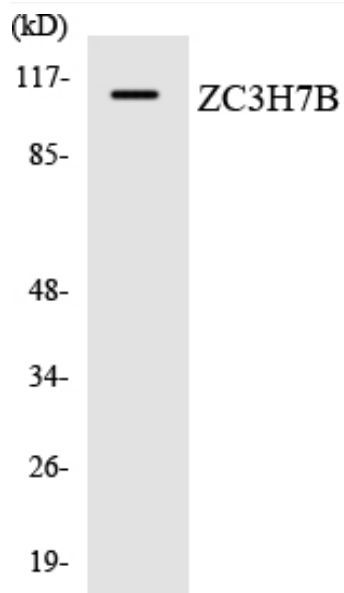
Western Blot analysis of various cells using RoXaN Polyclonal Antibody cells nucleus extracted by Minute TM Cytoplasmic and Nuclear Fractionation kit (SC-003, Inventbiotech, MN, USA).



Immunohistochemical analysis of paraffin-embedded Human brain. Antibody was diluted at 1:100 (4° overnight). High-pressure and temperature Tris-EDTA, pH 8.0 was used for antigen retrieval. Negative control (right) obtained from antibody was pre-absorbed by immunogen peptide.



Western blot analysis of lysates from 293 cells, using ZC3H7B Antibody. The lane on the right is blocked with the synthesized peptide.



Western blot analysis of the lysates from HUVECcells using ZC3H7B antibody.